



YLI ELECTRONIC

# ANSI Heavy-Duty Electric Strike

Model:YS-140



## Parameters (Unit:mm)

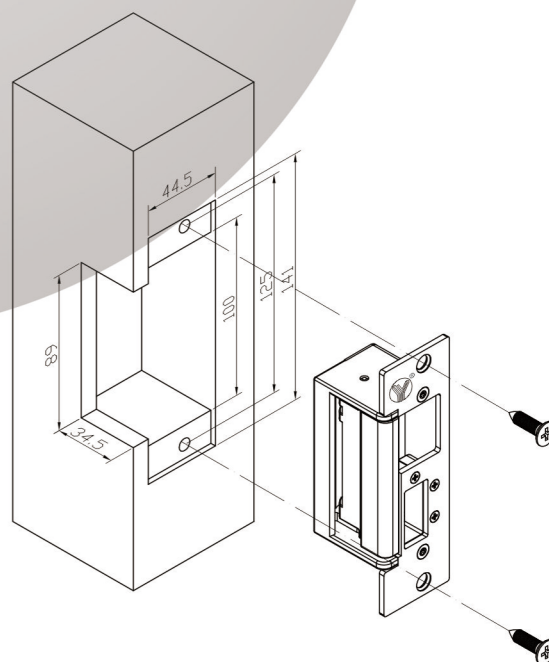
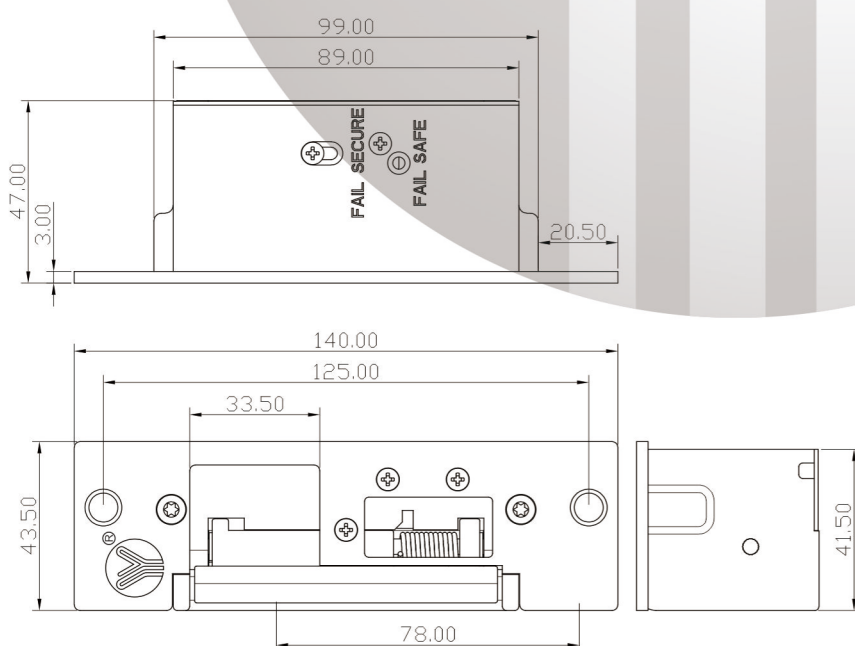
Feature	Fail Safe/Fail Secure(Adjustable)
Face Plate	140Lx43.5Wx47H
Holding Force	1000lbs
Magnetic Valve	500000 times
Voltage	12VDC(Need Order 24VDC)
Current	280mA
Suitable Temperature	-10~+50°C(14~131F)
Operating Humidity	0~90%(non-condensing)
Weight	0.6kg

## Standard Features

- 1 Fail safe or fail secure reversible
- 2 Left-way opening or right-way opening installation adjustable
- 3 Stainless steel bolt,304 stainless steel faceplate
- 4 Max static pressure holding force is 1000 lbs
- 5 Magnetic valve duration>500000 times

## Dimensions

## Overall Dimensions



## Function Conversion

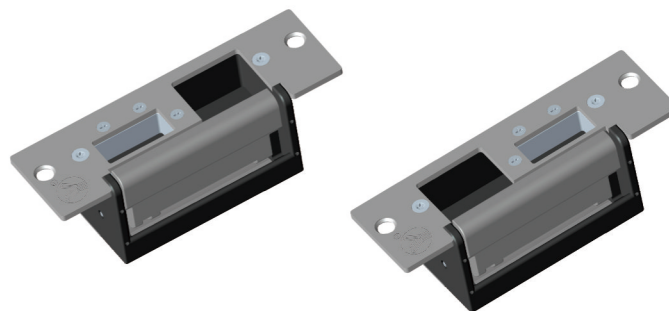
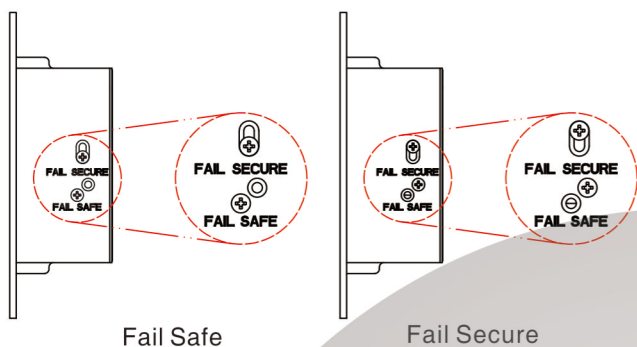
## Adjustable installation

You can set the operation mode of Fail Safe or Fail Secure.

Loose the screw and tighten it in the other hole.

Fail Safe(NC): When power off, the door is in the open status.

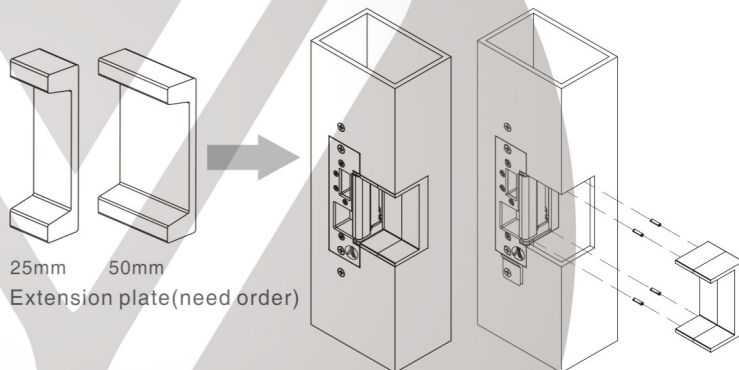
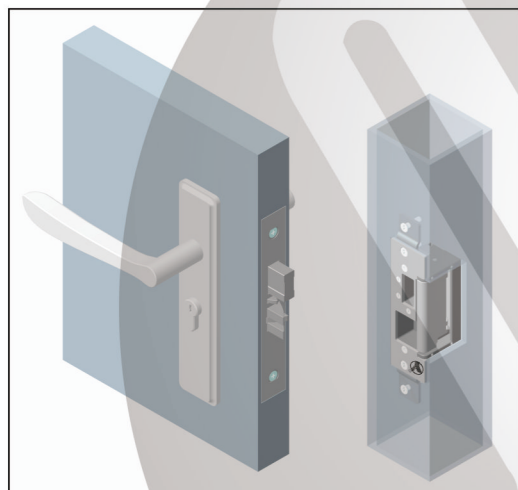
Fail Secure(NO): When power off, the door is in the closed status.



## Installation Diagram

## Accessories

If the door frame is too thick, please use the extension plate. Installation is as the follows.



## Wiring Diagram

