



YLI ELECTRONIC

Fail Safe Electric Bolt W/Signal Time, Open Wire

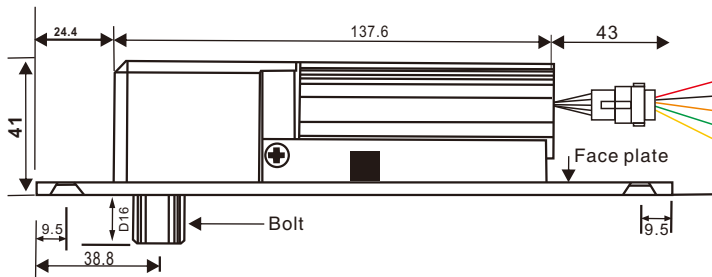
Model:YB-300



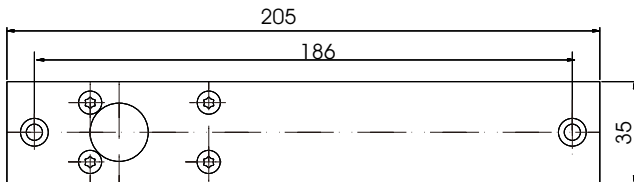
Parameters

Face Plate	205Lx35Wx41H(mm)
Magnetic Plate	90Lx25Wx2H(mm)
Decorative Panel	215Lx40Wx0.5H(mm)
Bolt	16mmDIA, stainless steel 16mm throw
Signal Output	NC/COM
Time Delay	0/3/6/9 sec
Voltage	12-24VDC
Current	12V/900mA 12V/120mA;24V/730mA 24V/80mA
Fail Safe	Locked when energized
Suitable for	Wooden door, metal door, glass door
Weight	0.7 kg

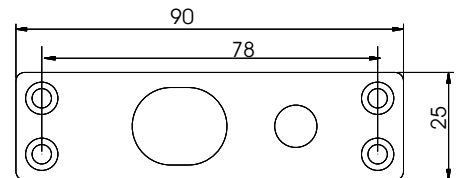
Dimensions



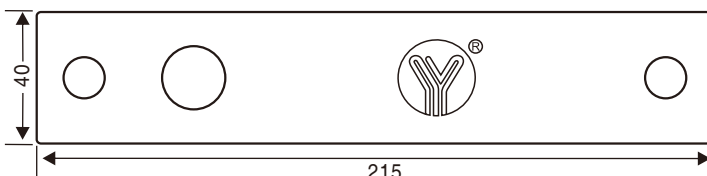
Red	+
Black	-
Orange	OPEN
Green	COM
Yellow	NC



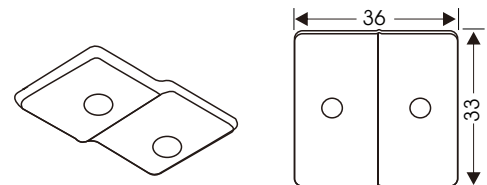
Face plate



Magnetic Plate

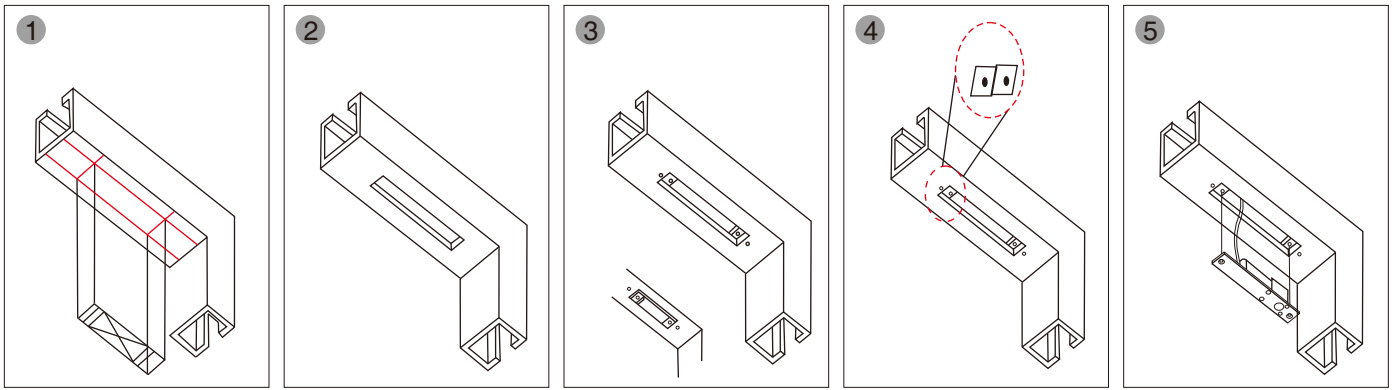


Decorative Plate



Extended Plate

Installation



1 Place lock body template to match with door frame center line

2 Cut hole

3 Fix mounting plate (For hollow metal frame)

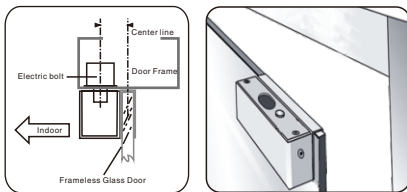
4 Connect wires

5 Mount lock body on the door frame and test

Installation Instruction

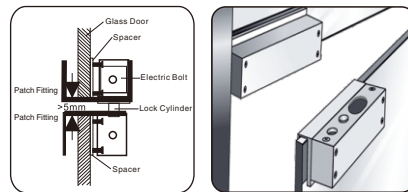
Frameless Glass Door

Suitable for 10-15mm glass door, BBK-600/601/602 for Frameless Glass Door.



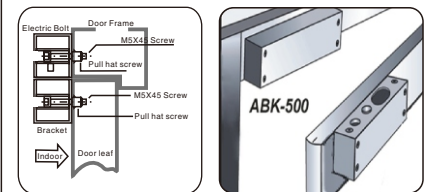
Fully Frameless Glass Door

BBK-700 for Fully Frameless Glass Door



Aluminium Bracket for Narrow Door

BBK-500 for Narrow Door



Wiring Diagram

